

PARIS2024
ENJEUX DE SANTÉ
PUBLIQUE ET
PRÉVENTION

14 juin 2024



***CETTE INTERVENTION EST FAITE EN TOUTE
INDÉPENDANCE VIS-À-VIS DE L'ORGANISATEUR DE
LA MANIFESTATION.***

***JE N'AI PAS DE CONFLIT D'INTÉRÊTS EN LIEN AVEC LE SUJET
TRAITÉ.***

OLYMPIC GAMES
FROM 26 JULY TO 11 AUGUST



PARALYMPIC GAMES
FROM 28 AUGUST TO 8 SEPTEMBER



OLYMPIC GAMES



10.500

ATHLETES



32

OLYMPICS SPORTS



208

INTERNATIONAL
COMITEES



31.500

VOLONTEERS

C1-INTERNAL

PARALYMPIC GAMES



4.400

ATHLÈTES



22

SPORTS
PARALYMPIQUES



187

DELEGATIONS
INTERNATIONALES



13.500

VOLONTAIRES

UN IMPACT MAJEUR

4Md

TELEVISION VIEWIERS

13,5 millions

SPECTATEURS

206 nations

REPRÉSENTÉES

+26.000

ACCREDITED MEDIA

35.000

VOLONTEERS

15 millions

SPECTATORS OF THE TORCH RELAY

OPENING CEREMONIES

PARIS2024



For the first time in history of the Games, the opening ceremony will not take place in a stadium but **in the city, around historical venues and in the Seine river.**

320.000 persons will be able to attend the ceremony, some of them free of charge.



... WIDE OPEN

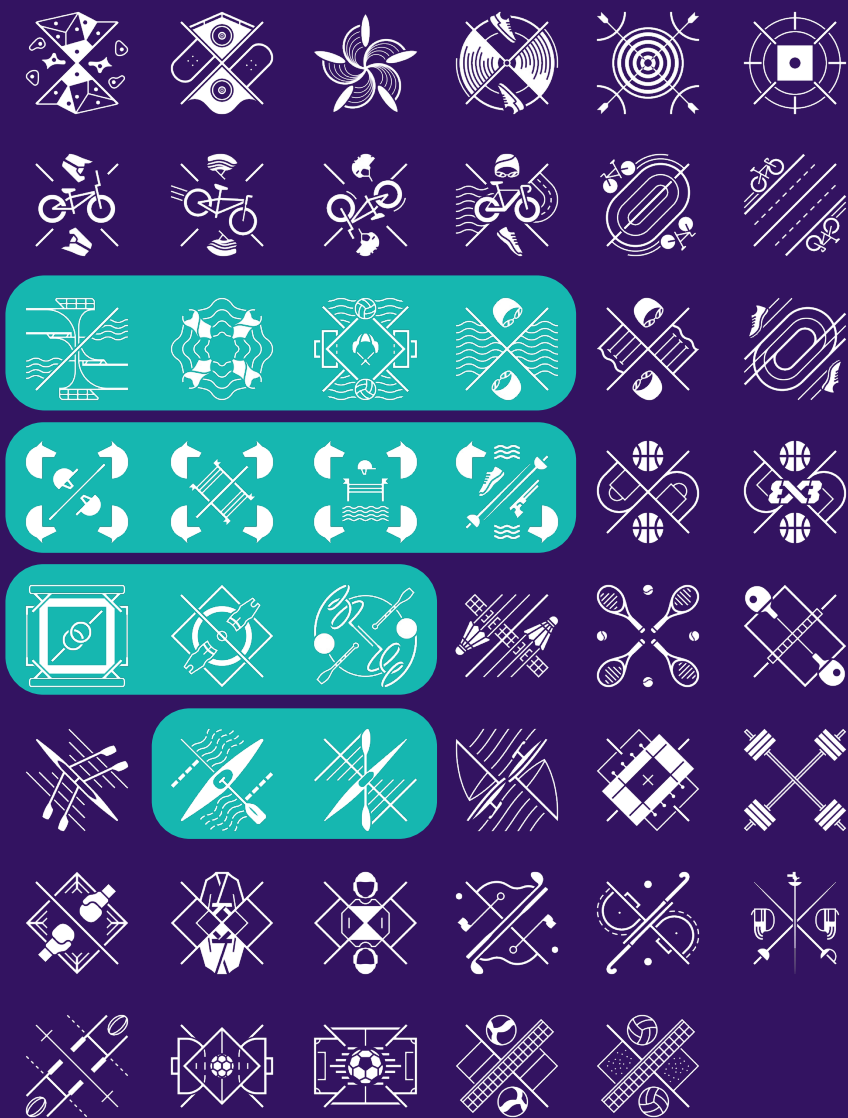


For the first time in the history of the Games, the opening ceremony does not take place in a stadium but in the heart of the city, on the Champs-Élysées avenue and Place de la Concorde, a highly symbolic location.

65,000 persons will be able to attend the ceremony, with some free access.

32 OLYMPIC SPORTS INCLUDING 4 ADDITIONAL SPORTS

PARIS2024



SKATEBOARD



BREAKING

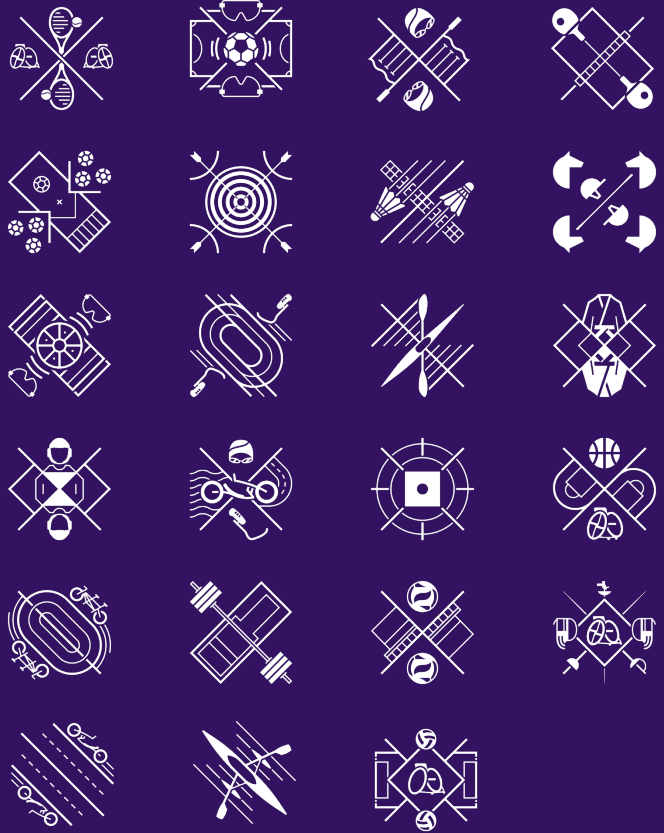


SURFING



SPORT CLIMBING

22 PARALYMPIC SPORTS





CONTINGENCY PLANS

WHAT IS A CONTINGENCY PLAN?



A contingency plan is a document that sets out how to intervene and adjust operations when an incident occurs.



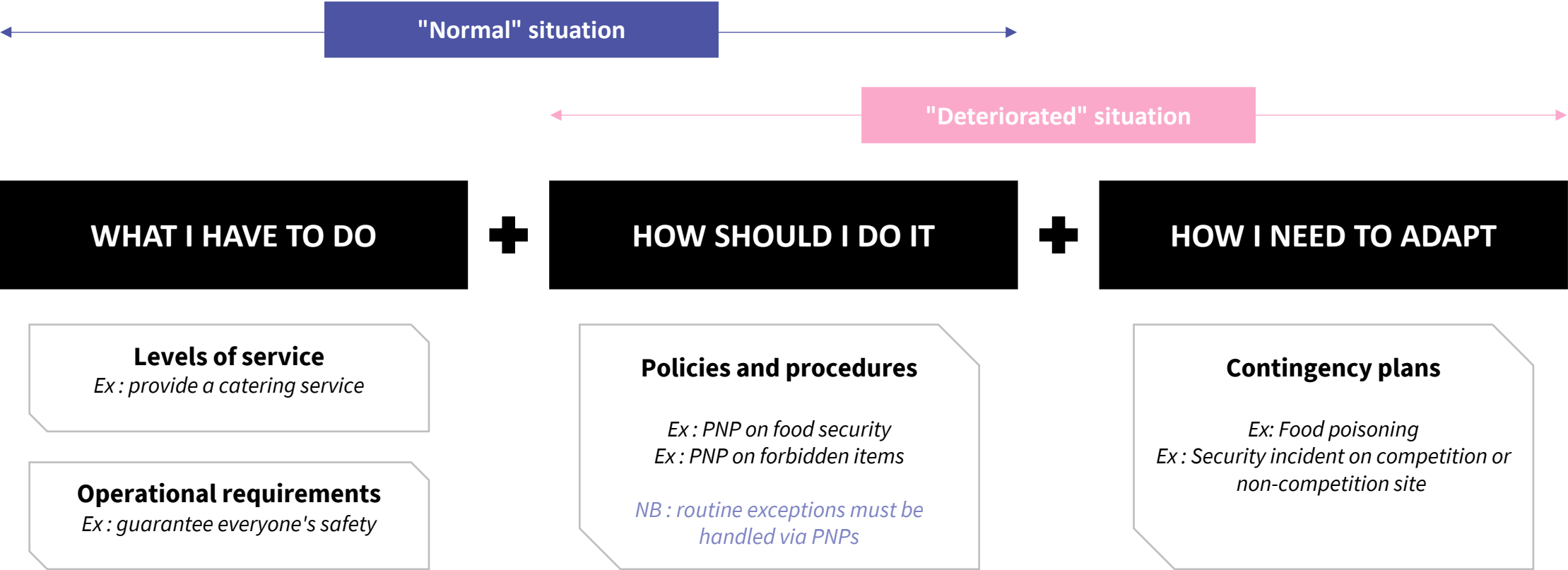
A contingency plan defines all the corrective measures that need to be implemented once the risk has occurred. It describes the steps to be taken in order to limit the various impacts caused by the incident, in particular:

- P** – People
- E** – Environment
- R** – Reputation
- A** – Asset
- L** – Legal
- O** - Operations



A contingency plan describes how the different teams coordinate to share information and respond to the incident.

THE COMPLEMENTARITY OF OPERATIONAL PLANNING EXERCISES



THE EXPECTATIONS OF A CONTINGENCY PLAN

1

Describe the situations leading to the activation of the plan

- By illustrating with examples of level 3, 4 and 5 incidents
- By specifying the situations excluded from the scope of application

2

Targeting the teams to be mobilised according to the severity of the incident




- Within Paris 2024: lead FA and impacted FA
- Externally: IOC/IPC, delivery partners or service providers, public stakeholders

3


Explain the communication chain

- Between the venue team, the ECC, the Venues Desk, the MOC and other affected command centres
- With external stakeholders

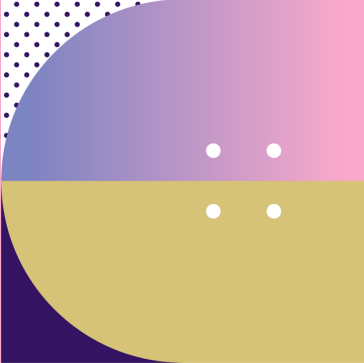
PARIS 2024 CONTINGENCY PLANS

Situation
Power outage at a competition site
TEC or cybersecurity service incident (severity 1 or 2)
Fire / Explosion on a competition or non-competition site
Security incident on a competition or non-competition site (excluding Villages and Ceremonies 1 and 3)
DIPAC Plans (Delay, Interruption, Postponement, Advancement, Cancellation)
Hot weather 
Serious incident affecting an athlete 
Inclement weather (thunderstorms, heavy rain, strong winds) 
Incident de sécurité aux abords d'un site
Incident affecting the workforce of Paris 2024 or its delivery partners 

Situation
Lack of human resources during the Games
Attack on the Olympic or Paralympic flame during the relays
Geopolitical crisis (war, diplomatic incident, etc.)
Disruption of operations at a competition or non-competition venue (excluding Villages)
Safety incident during Ceremony 1 and 3 (drone, political demonstration, accident, crowd movement)
Infection / epidemic (including Covid) 
Air pollution peak 
Incident management for Tahiti activities
Security incident in public transport
Safety incident in the Villages

Situation
Insufficient distribution of drinking water
Social movement, Strike
Loss of energy supply for vehicle fleet (gasoline, hydrogen, electricity)
Disruption to road transport (impacting emergency vehicles and Olympic and Paralympic routes)
Disruption to Village operations
Collective food poisoning 
Incident in doping control process (collection of control samples, doping analysis)
Impossibility of access to airport and rail sites (road access blocked) due to industrial action.
Incident requiring evacuation of a station or airport (suspicious package alert, terrorist attack alert, etc.)
Incident during transport of athletes
Desinformation

KEY MED GENERIC RISKS



Name	Description
Workforce unavailability	Generic risk related to a shortage of workforce (transport strike, emergency doctor requisition or unavailability, etc.)
“External” epidemic (eg: in a specific area of the globe)	Emergence of a pandemic outside the national territory
Heat wave	Generic risk related to high temperatures that can lead to a health risk for the general population and athletes in particular
Intervention in the crowd (LCO)	Specific risk related to the need to intervene for athletes in the middle of the public (special structures such as pits for skateboarding and circulation in the crowd).
Intrusion (polyclinic)	Specific risk related to the immediate proximity of buildings with a view of the polyclinic
Accessibility (GRP)	Specific risk related to the complexity of the venue (several levels, dependence on elevators).
Complexity of FOP intervention (VEL)	Specific risk related to the slope of the track and the risk of additional accidents
Incident nearby (PDP)	Specific risk related to the security perimeter
Water natural risks	Specific risks linked to marine fauna for events taking place in particular in Tahiti and Marseille (shark bites, jellyfish stings, stone fish stings, sea urchin stings, ray stings or lionfish stings).

CONTINGENCY PLAN

Infection-Epidemic



Plan description:

This plan is to be deployed in the event of situations presenting a risk of infection:

- Upper respiratory infection
- Acute gastrointestinal infection
- Notifiable diseases (ND)

The plan can be activated in 3 ways:

- A suspicion is detected by the Paris 2024 Local Doctor Manager
- A suspicion is detected by NOC/NPC Doctors
- A suspicion is detected by public authorities

It specifies the system of communication and coordination within Paris 2024 and between Paris 2024 and the competent public authorities (Regional Health Agencies, Public Health France, Directorate General of Health/CORRUSS).



Objectives

- Organise reciprocal alerts between Paris 2024 and the relevant State services;
- Assist government departments in their on-site investigations;
- Monitor the care of patients by hospitals and – apart from spectators – their return to their place of residence (VOP, satellite villages, HFH/PFH, etc.);
- Adapt Paris 2024 operations by implementing corrective measures to prevent the spread of the risk factor:
 - State-imposed measures;
 - Measures recommended by medical services



Exclusions :

This plan does not cover the following situations :

- Cases of foodborn illness outbreak (dedicated plan: CP-MED-30).

Threshold Activation:

- In the case of athletes, on any suspicion of a notifiable disease, or if the athlete being treated shows signs of upper respiratory infection or gastrointestinal infection.
- For other populations, if the patient with signs of notifiable illness, upper respiratory infection or gastrointestinal infection had to be evacuated to a hospital

Illustrations :

- Level 3 : detection of a notifiable disease affecting an athlete.
- Niveau 4 : detection of generalized acute gastrointestinal infection, in several athletes at multiple venues.
- Niveau 5 : a global pandemic that jeopardizes the holding of the Games.



CONTINGENCY PLAN

Infection-Epidemic

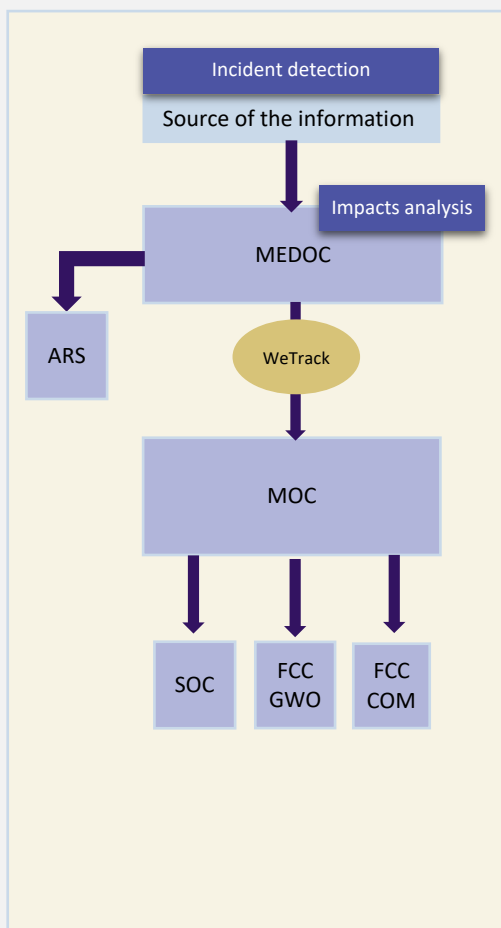


PARIS2024

Lead FCC	FA involved in response	Delivery partners impacted	Competition site	Non-competition site	others
MED	VIL, NCS, BRS/PRS, DIG, SPT, GWO	ARS, SPF, HOPITAUX	ALL	ALL	N/A

Players' roles and responsibilities	Communication scheme	Summary of applicable measures
-------------------------------------	----------------------	--------------------------------

	IRG	IMT	ESMT
FCC impacted : SOC, GWO	A/C	C	C
ECC	R	R	R
MEDOC	-	-	-
Local Doctor Manager	R	R	R
Hygiene and food safety referent	C/I	C/I	C/I
Head of MEDOC	A	C	C
MOC	-	-	-
Head of MOC Operations	C	C	C
Chief of MOC	C	C	C
COO	A	A	C
EXE	I	A/C	A

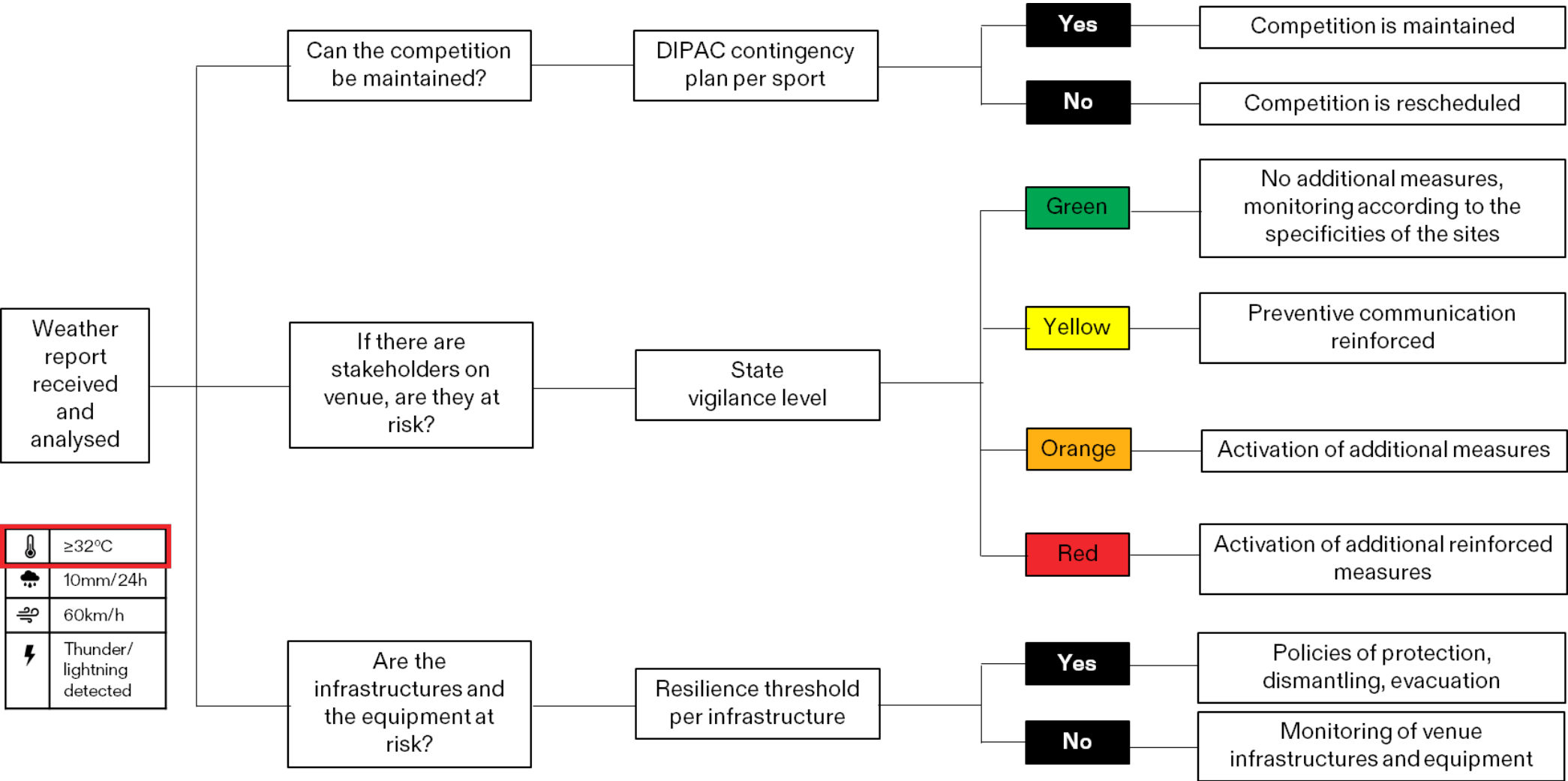


Lead	Measure
Source of information	The source of the information (Local Doctor Manager, Paris 2024 Medical Services Doctor, NOC/CNP Doctors, ARS, SPF) detects a suspected notifiable disease, upper respiratory infection or gastrointestinal infection on an athlete/accreditation/spectator and immediately reports it to the MEDOC.
MEDOC	MEDOC immediately warns the Agence Régionale de Santé (public health regional agency) by filling in the CERFA and referencing information of the patient's electronic medical record.
MEDOC	Immediately coordinates, with the Local Doctor Manager / Paris 2024 medical services doctor(s) of the site(s) concerned: <ul style="list-style-type: none"> The implementation of measures to protect medical personnel; The implementation of barrier measures for patients as soon as they present respiratory symptoms (surgical masks, SHA); If necessary, isolation of patients while awaiting transfer to a hospital; The transfer of the patients concerned to the hospital for care and confirmation of the infectious agent after consultation with the SAMU.
MOC	Coordinates a first impact analysis (P.E.R.A.L.O impact analysis), on the activities of MED and FCC impacted according to the populations affected and the type of infection/epidemic.
MEDOC	Ensures the implementation of additional measures identified to stem the spread of the disease and ensure the link with hospitals for the care of patients: <ul style="list-style-type: none"> Alerting and informing MED staff (P24 employees, service providers and volunteers) for the implementation of a reinforced health protocol; The implementation of an enhanced cleaning protocol; Isolation of the patients concerned as soon as they are discharged from hospital (8 isolation rooms identified in the village); The implementation of prophylactic treatment for contact cases.
FCC COM	<ul style="list-style-type: none"> In case of large-scale infection, MIG coordinates with Santé Publique France (National Health Agency) and Agence Régionale de Santé (Regional Health Agency) FCC COM confirms the communication strategy to the MOC. The MOC, on recommendation of FCC COM and with the lead and impacted FCC confirms the communication strategy for spectators and other stakeholders.
SOC	Ensures that the CSCC has planned for the implementation of DIPAC plans.
FCC GWO	Ensures that the additional measures identified to isolate infected WKF members, replace absent WKF members, and inform other WKF members have been implemented.
Venues Desk	Liaises with the EGMs/ECCs of the relevant site(s) during the IRG/IMT/ESMT EGMs/ECCs must: <ul style="list-style-type: none"> Support the implementation of additional measures identified at the FCC level and applicable to their site Be a source of proposals to complete these measures on their site

R: Responsible – A: Accountable – C: Consulted – I: Informed

CRITICAL THRESHOLD

PARIS2024



CONTINGENCY PLAN CP-PNC-9

Intense heat



C1-INTERNAL

PARIS2024



Plan description :

The plan has three triggers:

1. **The levels of state** vigilance that define the more or less reinforced deployment of additional thermal comfort measures;
2. **The resistance thresholds** of infrastructures and equipment that determine their criticality, and the need to protect, dismantle and evacuate them if necessary;
3. **Contingency plans by sport**, including maximum temperature thresholds set by the International Federations, decide whether a competition can take place or whether it needs to be rescheduled.



Objectives

The 3 main objectives of this plan are to:

- Guarantee the safety of people at all Paris 2024 venues;
- Organize business continuity, including sports competitions;
- Maintain as much as possible a reasonable level of thermal comfort for Paris 2024 stakeholders in line with our ambitions for environmental excellence.



Exclusions :

The plan does not cover the following situations

- The Severe Weather Contingency Plan (CP-PNC-10);
- Droughts and Water Scarcity ;
- Air Pollution Peaks.

Activation threshold

1. **The health and safety of people at one or more Paris 2024 venues** are at risk due to an episode of high heat ("yellow" or higher level of state vigilance);
2. **The temperature on one or more FOPs does not allow the competitions to be maintained** under the nominal conditions defined with each IF;
3. **The infrastructure for hosting and organising the Games is at risk or out of service** due to intense heat

Illustrations :

- Level 3: Forecasting of extreme weather conditions requiring the rescheduling of a competition.
- Level 4: A large number of spectators and volunteers have to be taken care of because of the extreme heat.
- Level 5: Forecasts that make it impossible to continue with the Games.

IRG

IMT

ESMT

CONTINGENCY PLAN CP-PNC-9

Intense heat



C1-INTERNAL

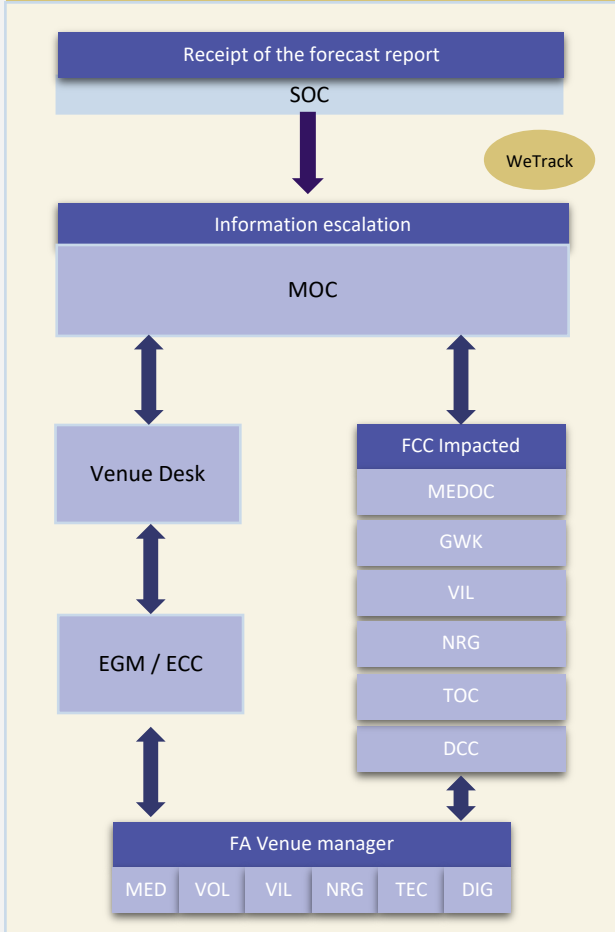
PARIS2024

Lead FCC	FA involved in response	Delivery partners impacted
MOC	ALL	Public Stakeholders, IOC/IPC, Météo France, Santé Publique France, Direction Générale de la Santé, FI, Partners and Delivery Providers

Players' roles and responsibilities

	IRG	IMT	ESMT
ECC	-	-	-
FA venue Manager	R	R	R
Event General Manager	R	R	R
Venue Desk	R	R	R
FCC Impacted (GWO, VIL, NRG, LIC, DCC, TOC, MEDOC)	A	C	C
SOC	A	C	C
MOC	-	-	-
Head of MOC Operations	C	C	C
Chief of MOC	A	C	C
COO	A	A	C
EXE	I	I/A	A

Communication scheme



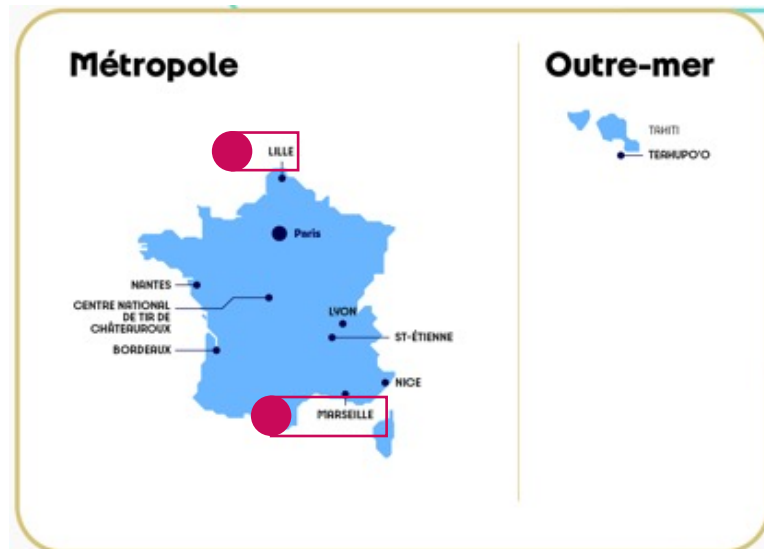
Competition site	Non-compétition site	Other
ALL	ALL	N/A

Summary of applicable measures in incident resolution

Lead	Mesure
SOC (with MOC)	Receives the daily weather report from the Weather Information Centre, verifies the information and informs the MOC of the risk of intense heat on D+10 which activates a GSE cell.
Measures concerning volunteers and the workforce	
FCC GWK (WKF, Venue Desk EVM, FCC EVS)	Ensures the proper implementation of additional measures for the WKF, the objectives of which will be to maintain the health, safety and thermal comfort of the Workforce on the site(s) concerned.
Health prevention measures	
MEDOC (with MED business experts, FCC CTY, GSCC, State services)	Ensures the proper implementation of additional measures, the objectives of which will be to coordinate the adjustment of the medical device within the scope of responsibility of Paris 2024; to ensure, in collaboration with CTY, that the measures deployed by local authorities and State services beyond the scope of responsibility of Paris 2024 are consistent and complementary to those proposed within the scope; ensure the coherence and complementarity of the prevention messages that will be disseminated.
Measures concerning energy supply and equipment	
FCC NRG and TOC (with NRG and TEC business experts, ENEDIS)	This is followed by the proper implementation of the pre-identified additional measures to maintain the energy supply at the site(s) concerned as well as the protection of the technological equipment identified as "critical" for the smooth running of operations.
Measures related to FNB, LIC and communication operations	
MOC (with business experts FNB, CNW, LOG, TRM, SUS, EVS, etc.)	Follows the proper implementation of the pre-identified additional measures, the objectives of which will be to adjust the water and beverage supply accordingly on the site(s) concerned (via FNB); reinforce the VSAs with water bottles; if necessary, reinforce water distribution points at the WKF with access restrictions; adjust the collection of waste at the site(s) concerned accordingly (via CNW); oversee the deployment of protective equipment requested by each ECC from the FCC LOG; to supervise the proper display of preventive messages on the sites by MED.
DCC (with DIG, SPX, TKT, VBO)	Follows the proper implementation of the pre-identified additional measures to ensure that the preventive communication plan for our spectators is well implemented; and ensure that commercial operations at our affected venues anticipate the impacts of intense heat.
FCC LIC (VBO, DCC)	Adjusts inventory and services in stores to provide an offer adapted to the circumstances.
EGM/VGM (SPX, LGY, SPT, ECC)	Follows the recommendations of the State, which may decide to limit physical activities due to the heat, therefore activities must be suspended until normal returns.

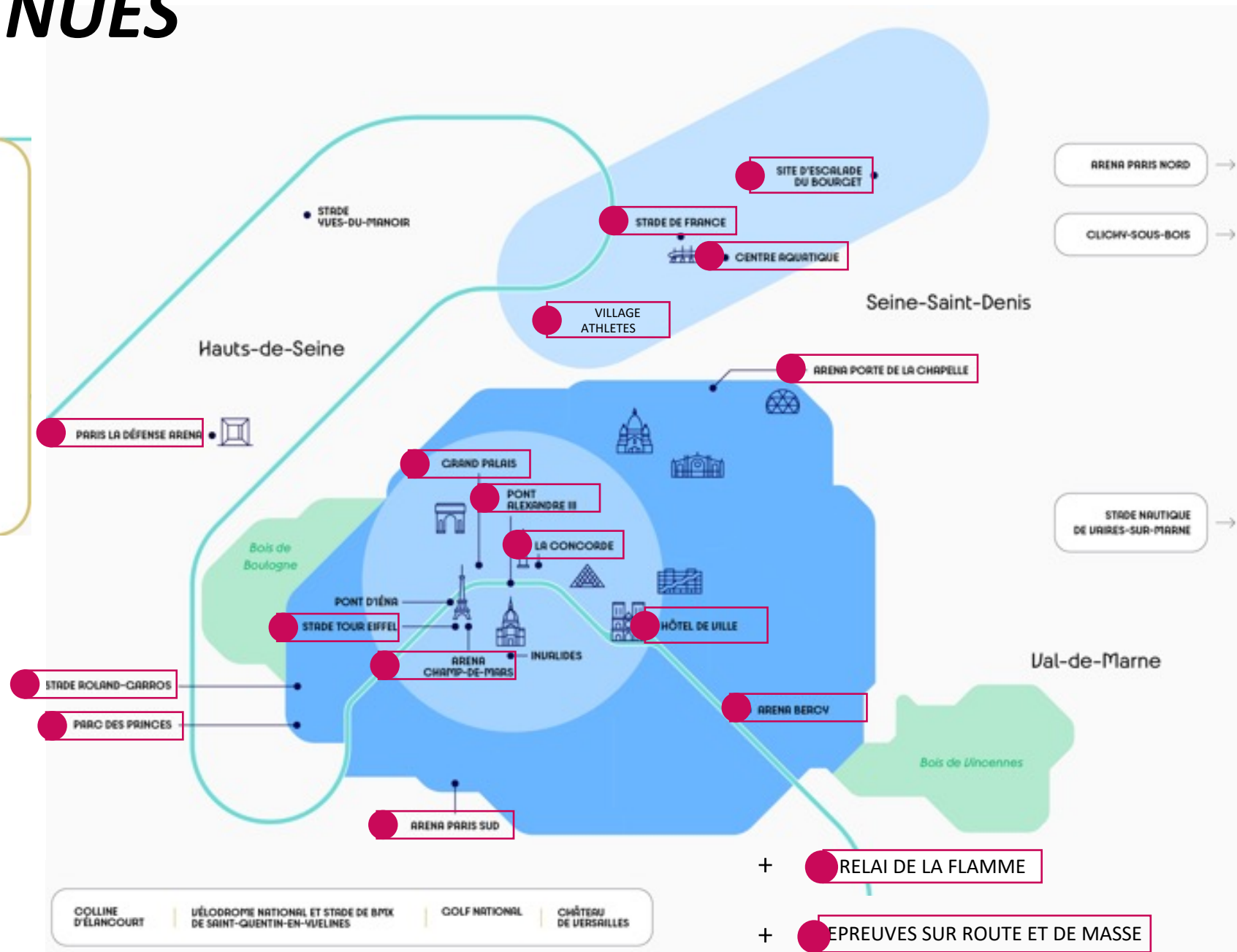
R: Responsible - A: Accountable - C: Consulted - I: Informed

COMPETITION VENUES

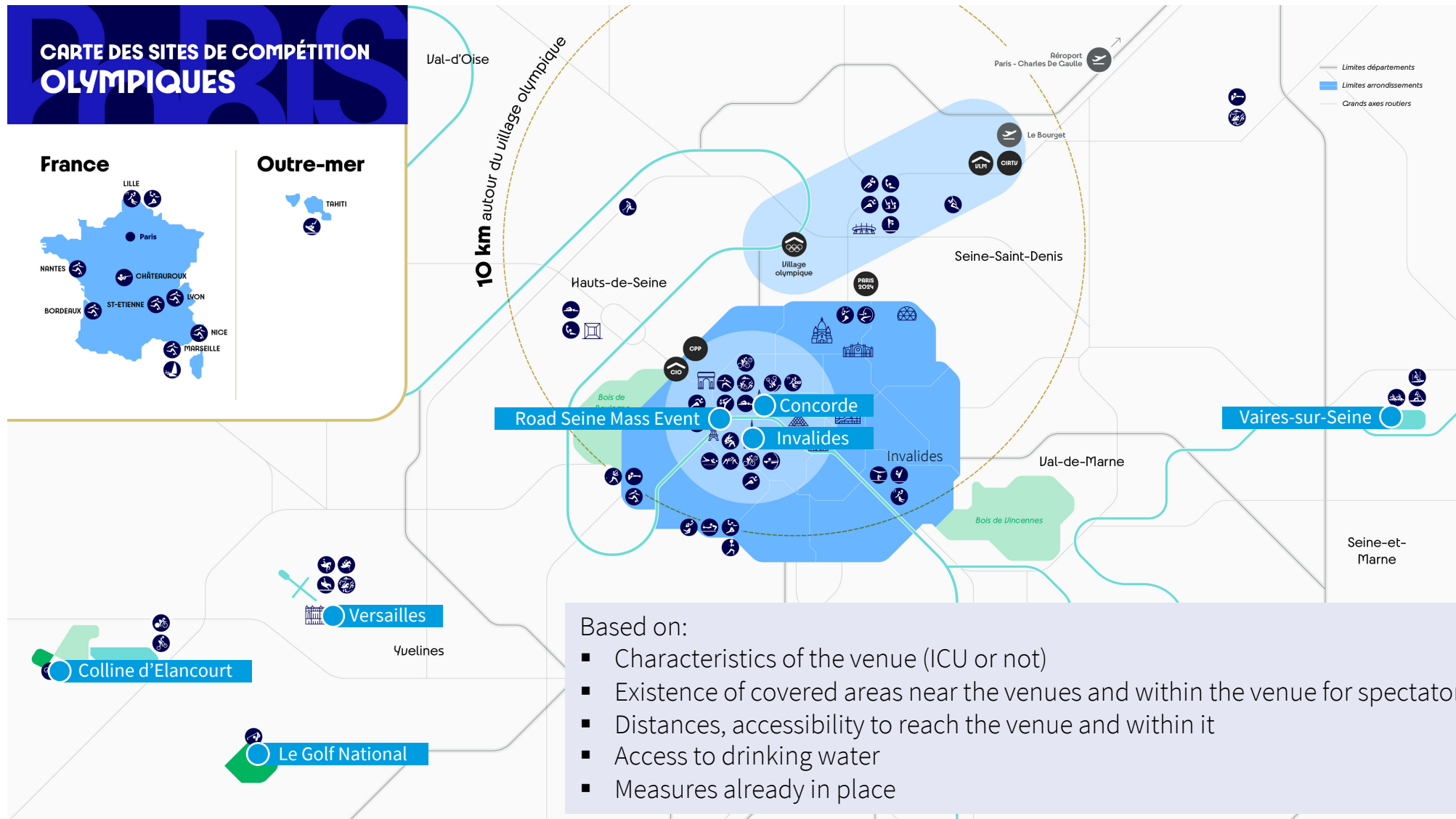


● ICU venue - Urban Heat Island

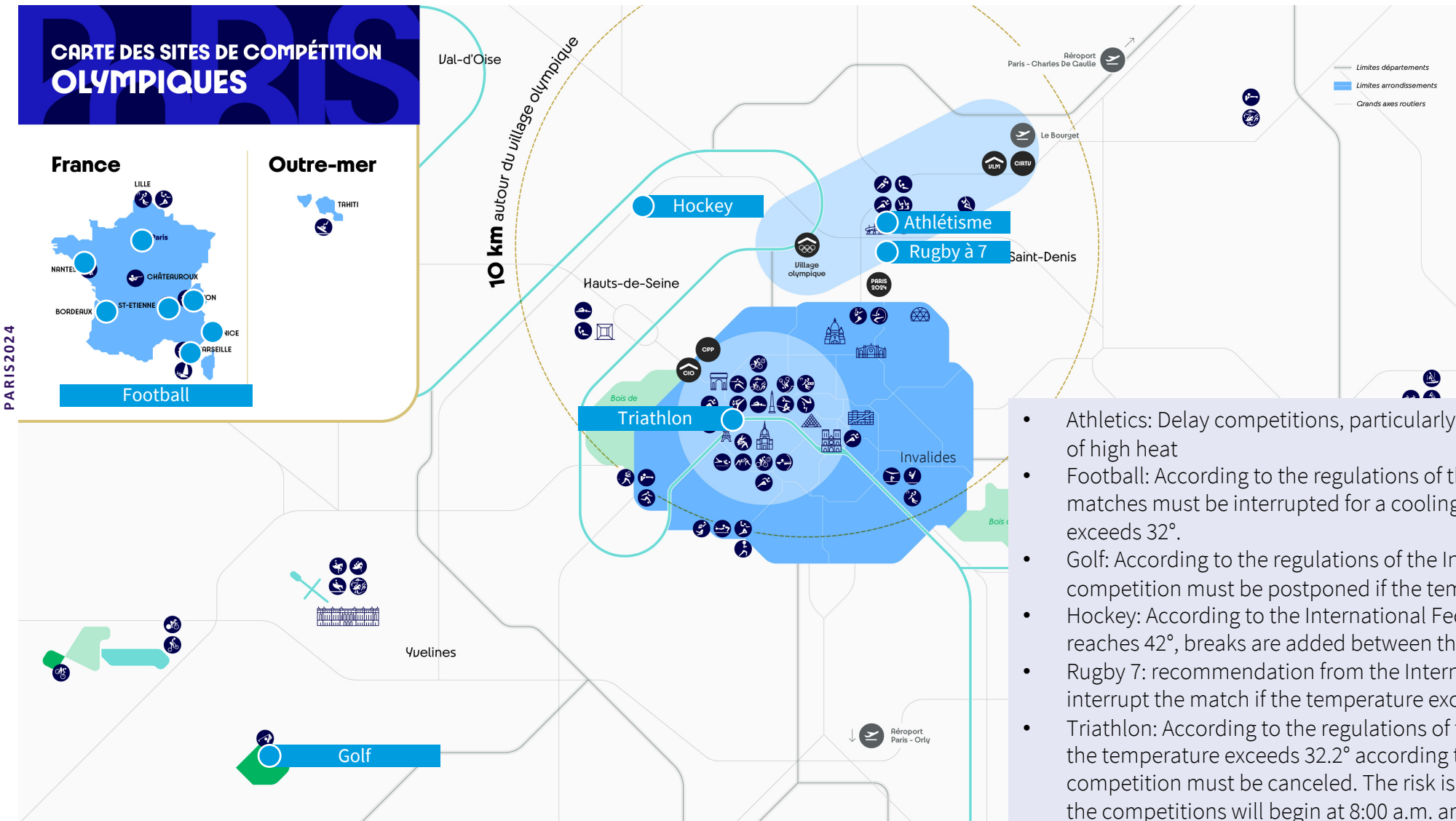
● Non ICU venue



FOCUS ON VENUES AT RISK FOR SPECTATORS



FOCUS ON VENUES AT RISK FOR ATHLETES



- Athletics: Delay competitions, particularly endurance races, in the event of high heat
- Football: According to the regulations of the International Federation, matches must be interrupted for a cooling break if the temperature exceeds 32°.
- Golf: According to the regulations of the International Federation, the competition must be postponed if the temperature is above 37 degrees.
- Hockey: According to the International Federation, if the temperature reaches 42°, breaks are added between the different quarters.
- Rugby 7: recommendation from the International Federation to interrupt the match if the temperature exceeds 30°.
- Triathlon: According to the regulations of the International Federation, if the temperature exceeds 32.2° according to the WBGT index, the competition must be canceled. The risk is nevertheless reduced since the competitions will begin at 8:00 a.m. and end around 10:00 a.m.

GENERIC COUNTERMEASURES

BASED ON A SCENARIO OF 32°C / 40% OF HUMIDITY



Transverse countermeasures

Category	Measures	FA Lead
Infrastructure and equipment	Adaptation and performance of infrastructures to cope with extreme heat	VNI
	Nominal operation of the ENEDIS energy network in the event of extreme heat	NRG
	Misting/vegetation of risky sites	VNI
	Resistance of technical equipment	TEC
	Resistance of signage (glue, ink)	LNS
	Air conditioning of certain sites/spaces	VNI
Water	Installation of drinking water fountains on all sites	VNI
Cleaning	Odor management	CNW
	Anticipation of a surplus of waste such as water bottles	CNW
Rate Card	Sale / rental of adapted equipment (water bottles, fans, mobile air conditioning) on the Rate Card	RTC

GENERIC COUNTERMEASURES

BASED ON A SCENARIO OF 32°C / 40% OF HUMIDITY



Countermeasures Spectators

Category	Measures	FA Lead
Infrastructures and equipments	Installation of shade tents and spectator shelters at PSA crossings and in congestion areas on outdoor sites which do not have shade	VNI
Water	Authorization given to spectators to come with their water bottles	SEC
Health and rescue	On-site sale of drinks and products to protect yourself (caps, hats, bucket hats, sun creams, fans, misters, etc.)	VBO
	First aiders deployed on site to prevent and rescue heatstroke	MED
	Installation on certain sites of shaded “Chill zones” for spectators	VBO
Information	Information on weather conditions and associated instructions, personalized in real time and location, via various channels (website, mobile application, email, SMS)	DIG
	Dissemination of weather data and associated instructions on the sites (display, announcements)	EVS

FOCUS ON INFORMATION PROVIDED TO SPECTATORS

1 REAL TIME AND LOCATION BASED INFORMATION

Via Mail

- Weather inserts with prevention advices will be systematically integrated into emails a few days before the session
- These weather inserts will be personalized in real time and location depending on the time and location of opening
- Available in 11 languages

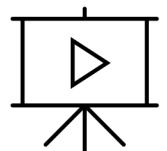
Via SMS in case of emergency

- In-app push notification or SMS if emergency
- French/English

2

Static information

Paris 2024 app, website, and spectators' guide, posters, videos



GENERIC COUNTERMEASURES

BASED ON A SCENARIO OF 32°C / 40% OF HUMIDITY



Countermeasures OLY/PAR Family

Category	Measures	FA Lead
Infrastructures and equipments	Thermal comfort of spaces dedicated to the Olympic and Paralympic family (lounges) <ul style="list-style-type: none">• ICU* venues: -6° compared to the outside temperature• Other venues*: ventilation	VNI
	Accommodation in air-conditioned hotels	GFS
Water	Provision of bottled water in dedicated areas (lounges)	FNS
Health and rescue	Presence of emergency services on site to prevent and rescue heatstroke	MED
Information	Information on weather conditions and associated instructions	GFS

GENERIC COUNTERMEASURES

BASED ON A SCENARIO OF 32°C / 40% OF HUMIDITY



Countermeasures Workforce

Category	Measures	FA Lead
Infrastructures and equipments	Thermal comfort of break areas dedicated to the workforce (rest, catering, etc.) • ICU* sites: -6° compared to the outside temperature • Other sites*: ventilation (ceiling fans)	VNI
Water	Distribution of water bottles to each member of the workforce (possibility of refilling them at water fountains)	FNB
	Supply of water to the workforce deployed on courses (marathon, torch relay, ceremonies, etc.)	PEM
Health and rescue	Provision of a uniform suitable for high temperatures (breathable materials, hat, shorts, etc.)	PEM
	Adaptation of rotations and break times for missions exposed to the sun	PEM
	Presence of emergency services on site to prevent and rescue heatstroke	MED
	Training of the management team in the management of heatstroke	MED
Information	Information for the workforce on weather conditions and associated instructions	PEM
Specific cases	Specific treatment of mascots and torchbearers	BIL, OPR

GENERIC COUNTERMEASURES

BASED ON A SCENARIO OF 32°C / 40% OF HUMIDITY



Countermeasures Athletes

Category	Measures	FA Lead
Infrastructures and equipments	Thermal comfort of indoor competition venues, in compliance with the regulations of the International Federations	VNI
	Thermal comfort of training sites, in compliance with the regulations of the International Federations	VNI
	Thermal comfort of spaces specific to athletes and associated populations (lounge, changing rooms, medical stations, etc.) • Specific venues*: 25°C • ICU* venues: -6° compared to the outside temperature • Other venues*: ventilation	VNI
	Thermal comfort in the Villages	VIL
	Thermal comfort in transport, pick-up and drop-off areas, and waiting areas	TRA
Water	Supply of bottled water	FNB
Health and rescue	Adaptation of the competition calendar for outdoor sports, in order to avoid the hottest hours. Rescheduling of competitions if necessary	SPT
	Presence of emergency services dedicated to athletes	MED
Information	Information for athletes on weather conditions and associated instructions	SPT

Countermeasures Athletes

Transport

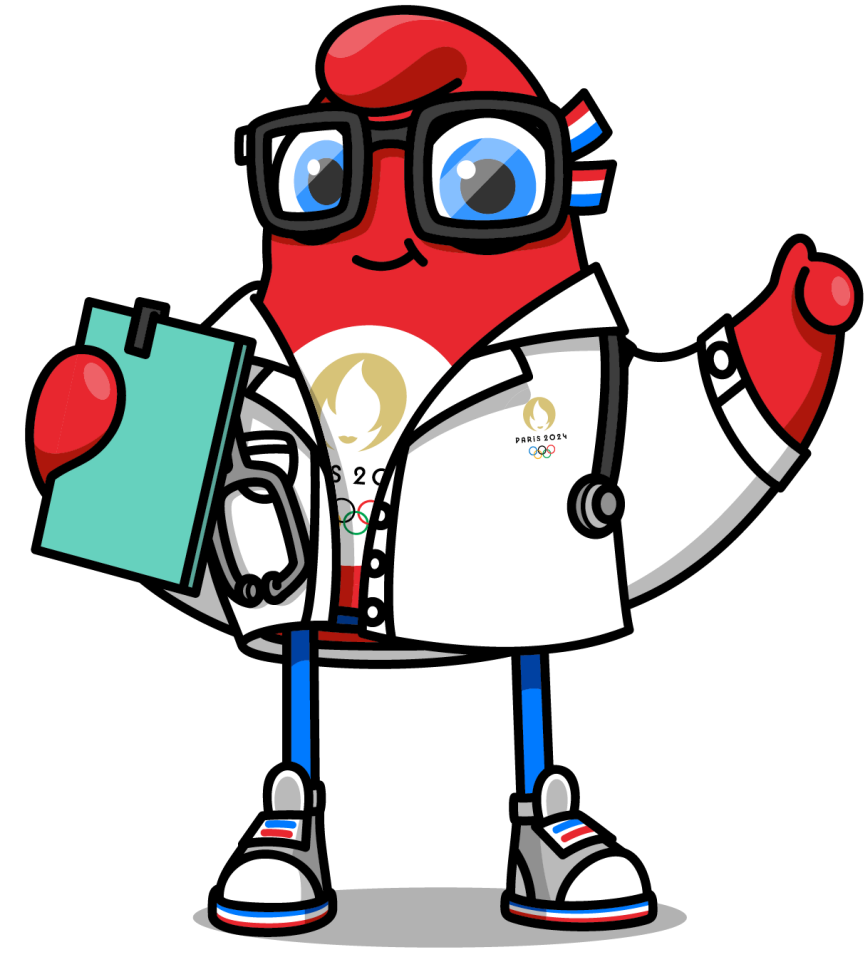
The transport buses will be public buses, only some of which are air-conditioned.

Priority will be given to the longest Oly and Para journeys, and to athletes with high spinal cord injuries and multiple sclerosis who have difficulty ensuring their thermoregulation.

Accommodation

In the Olympic and Paralympic Village

- **For Oly and Para athletes, advice will be given to place athletes on the lower, cooler north-east sections, avoiding the higher south-west sections.**
- **For athletes with high spinal cord injuries and those with multiple sclerosis who have difficulty regulating their temperature, a mobile air-conditioning system equal to 1 air-conditioner for every 3 athletes.**



MED ADDITIONAL MEASURES

Heat stroke baths:

- Rugby
- Athletics
- Men's and Women's Marathon
- Walking
- Mass Marathon
- Triathlon
- Mountain bike



Bain avec glace

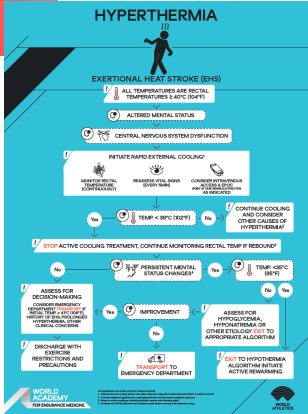
- Gants
- Moniteur de pH
- Civière en maille à immerger avec le patient
- Tuyau d'évacuation d'eau
- Draps
- Matériel pour RCP



Brancard de catastrophe



Sonde rectale





PARIS 2024 PREVENTION COVERAGE

PREVENTION AREAS

1

Nutrition, physical activity

Set of actions aimed at promoting the health benefits of sport and the link between nutrition and health

2

Mental health (including addictions)

All actions linked to psychological well-being but also the various subjects around addiction (alcohol, tobacco, excessive use of screens)

3

Sexual harassment

All sexual or sexist acts committed with violence, coercion, threat or surprise and violating fundamental human rights

4

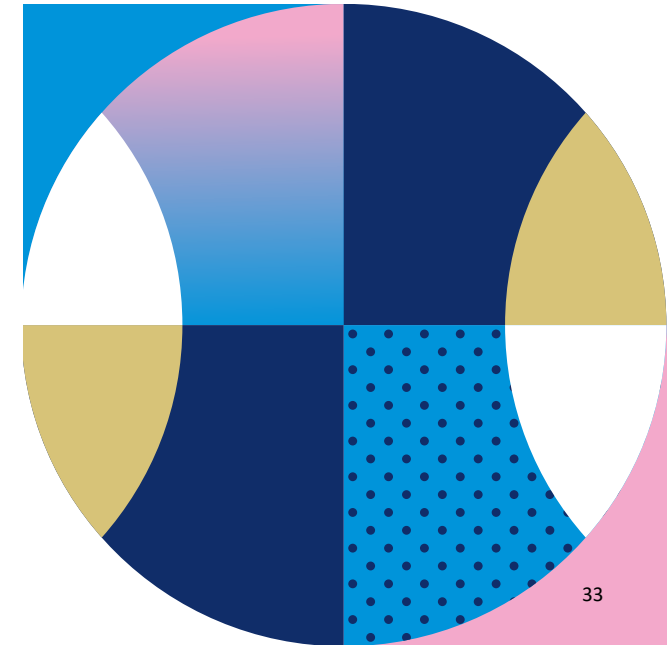
Inclusion

All actions aimed at enabling equal participation of individuals in the Paris 2024 project (disability, gender, etc.)

5

Physical health

All actions aimed at preserving the physical integrity of participants (including STDs prevention topics)

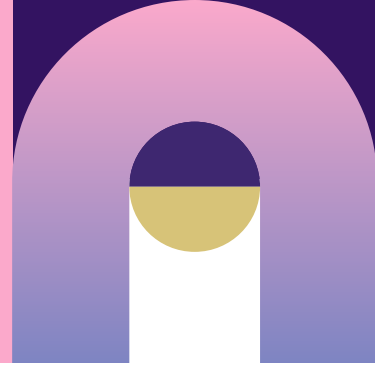




PARIS 2024 PREVENTION PLAN

PREVENTION PLAN CONTENT

PARIS 2024 MEDICAL TEAM



Excessive screen usage

Objectives:

- Raise awareness about this topic and its consequences
- Give concrete examples and solutions to help reduce excessive screen usage
- Provide educational material in link with existing mental health programs
- Surprise our audience with our content
- Remain consistent with other Paris 2024 communication campaigns

Target audience:

- Athletes
- NOC & NPC staff

Prevention of STDs

Objectives:

- Make audience realise STDs are still an issue
- Use fun and inclusive messages while maximizing the image of Paris, the city of Love
- Provide immediate solutions for safe sex (including condoms)
- Remain consistent with other Paris 2024 communication campaigns

Target audience:

- Athletes

UNLOCK YOUR POTENTIAL CAMPAIGN



Guide, posters, flyers and exhibition

(key figures,
consequences of
excessive screen usage,
self-assessment, tips,
collaboration with an
artist at the Polyclinic)



Media content

(podcasts, short videos
on causes and
consequences and
solutions)



Video testimonials

(athletes and experts)

FOCUS ON GUIDE



Nomophobia
Smombies
Digital
Selfitis
phubbing
Ringxiety pouting
sharenting
FOMO symptom
Multi
screening
Doomscrolling
Vibration

Preface by T. Estanguet (why mental health matters)

Introduction

Key facts and figures about you and your screens

Screens are everywhere!

We use screens all the time!

Your smartphone, your best life partner?

Excessive screen usage can have consequences

Did you know?

The consequences of excessive screen usage

What do we mean by excessive screen usage?

Excessive screen usage and sporting performance

Screens, sleep deprivation and performance

Digital media overuse and sport anxiety

Social networks and cyberbullying

Other risks

Did you know?

So, do you have a problem?

How to evaluate your screen usage?

Are you familiar with these terms?

What to do about excessive screen usage

Your race to become a gold medalist!

The race for future champions!

Support

FOCUS ON EXPERTS

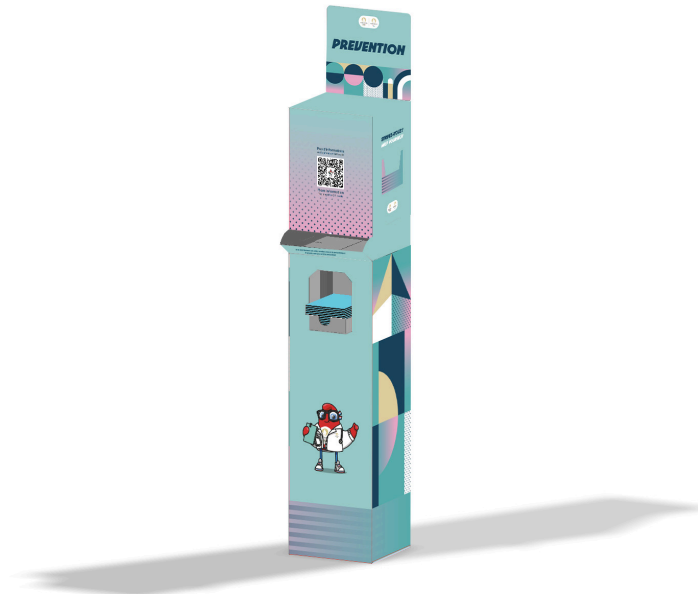
EXCESSIVE SCREEN USAGE CAMPAIGN

PARIS2024

- Dr. Serge Tisseron (psychiatrist, member of the Academy of Technologies)
- Dr. Megan Cannon (sport psychologist)
- Camille Carlton (Policy Director at the Center for Humane Technology)
- Mathieu Nédélec (Sport scientist in charge of recovery and sleep at INSEP)
- Pr. Nicolas Levéziel (head of the ophthalmology department at Poitiers University Hospital)
- Clément Leduc (Athelte)
- Carlotta Dudek (French breaking champion)
- Typhaine Soldé (French Paralympic athletics team)
- ...



STDS CAMPAIGN



Posters, flyers and exhibition

(key prevention messages including using national campaigns from other countries)



Condoms

(210 000 male condoms with latex, 10 000 without latex, 20 000 female condoms, 2 000 oral dam)



Testing

(HIV test and care pathway at polyclinic)

CONDOMS PACKAGING

CONFIDENTIAL (DO NOT SHARE)





MERCI !

